

TRACK

One of the best state track and field meets on record was held at Wichita on May 16. There was considerable wind against which the runners in the short races had to contend, but it was an ideal day otherwise. The attendance was the best on record, and the Wichita University authorities had everything organized in a highly efficient manner so that the meet was run off without delay.

Nine preliminary regional meets were held in which the boys qualified for the state meet and a very fine delegation of contestants was on hand for the championship finals. Independence high school won first place in the state meet with a total of 19.5 points. Wichita North finished second with 15 points, Hutchinson third with 14, Wyandotte fourth with 13, Wichita East 9, and Alma and Milton 8 each. A total of 41 schools figured in the scoring. This was the first state championship for Independence which came largely as a result of the points won by Mead Smith, who won first places in the 220- and 440-yard dashes and second place in the 100-yard dash.

Almost one hundred preliminary meets were held as qualifying meets for the regionals. More than four hundred schools support track and field teams and the number of contestants is steadily mounting each year.



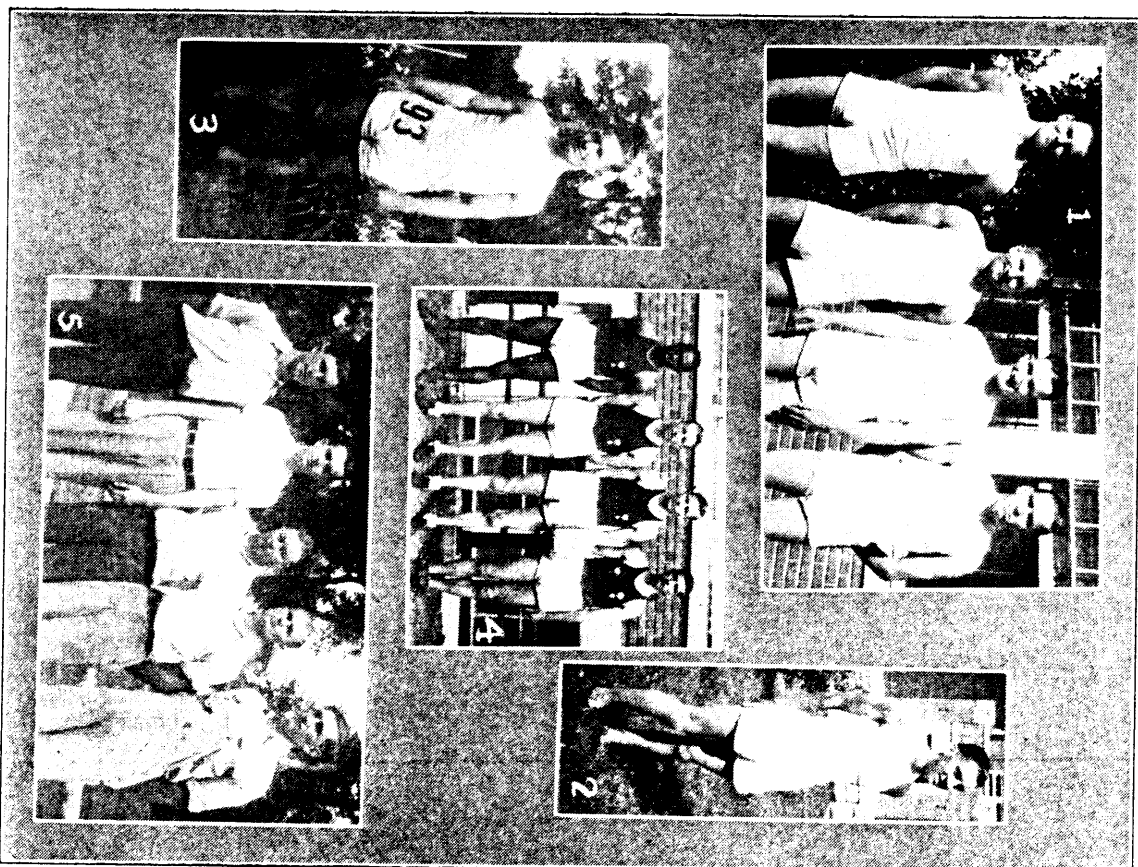
FINANCIAL STATEMENT OF STATE AND REGIONAL TRACK MEETS, TENNIS AND GOLF TOURNAMENTS

RECEIPTS

| | |
|-------------------------|-------------------|
| State Meet— | |
| Entry fees and receipts | \$458.20 |
| Regional Meets— | |
| Anthony | 75.00 |
| Concordia | 87.50 |
| Dodge City | 122.00 |
| Eureka | 114.50 |
| Horton | 77.50 |
| Norton | 61.00 |
| Ottawa | 64.50 |
| Pittsburg | 84.00 |
| Russell | 54.00 |
| | \$1,198.20 |

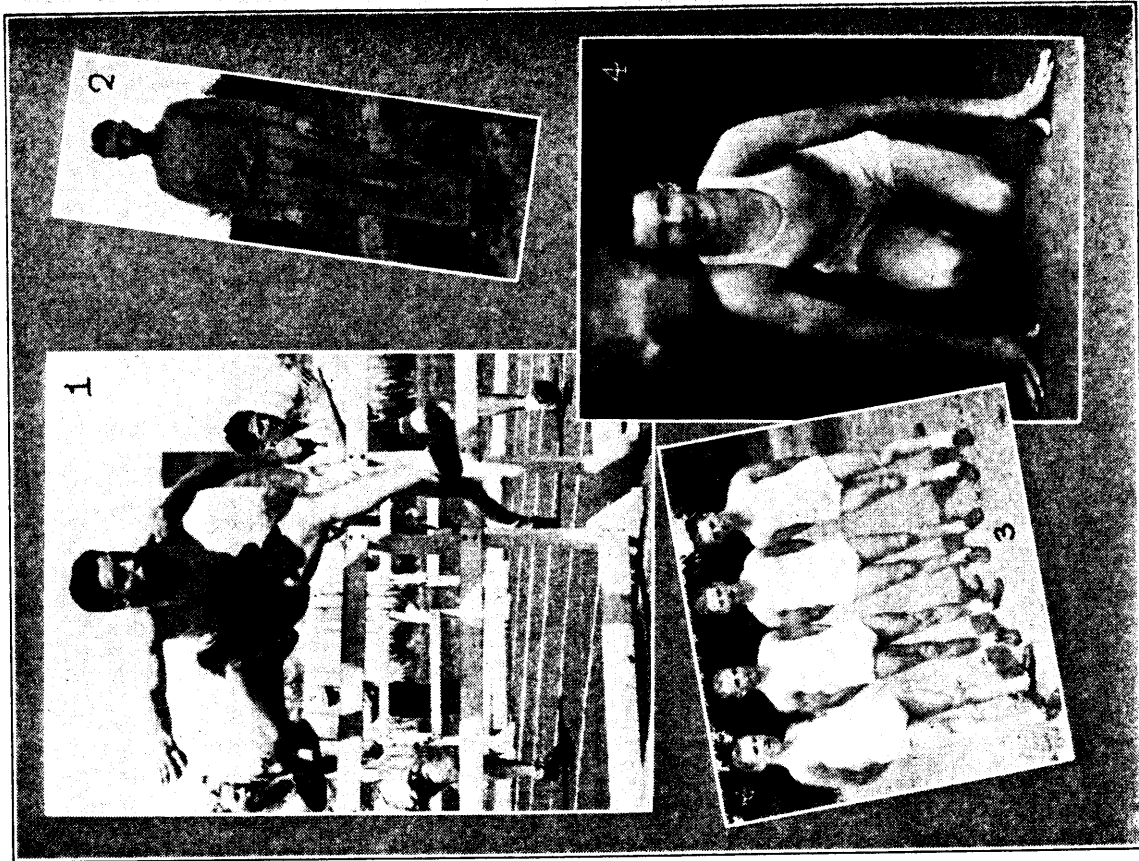
EXPENSES

| | |
|--------------------------|-------------------|
| State Meet— | |
| Medals and trophies | \$243.15 |
| Officials' expenses | 35.00 |
| Board of Control expense | 134.10 |
| Regional Meets— | |
| Medals and trophies | 497.60 |
| Officials' expenses | 35.65 |
| Tennis balls | 58.54 |
| Miscellaneous | 46.88 |
| | \$1,050.92 |
| Balance | \$ 147.28 |



SOME STATE TRACK AND FIELD CHAMPIONS

1. Kiowa, 880-yard relay team (Drake, Sneed, Logan, Lamkin).
2. Buckman, Argentine, high jump.
3. Kramer, Olabhe, 100-yard dash.
4. Emporia Class A medley relay team (Taylor, Denton, Rance, Maxwell).
5. Eskridge, Class B medley relay team.



STATE TRACK AND FIELD CHAMPIONS
 1. Lawrence, Wichita North, high hurdles. 2. Nelson, Kackley, 880-yard run.
 3. Burns mile relay team. 4. Cleland, Vinland, one-mile run.

OFFICIAL STATE TRACK MEET RECORDS

| EVENT | RECORD | HELD BY | YEAR EST. |
|------------------------|-------------------|----------------------------------|-----------|
| 100-yd. dash | 9.9 sec. | Holder, Marion | 1928 |
| 220-yd. dash | 21.6 sec. | Hocker, Minneapolis | 1927 |
| 440-yd. dash | 49.4 sec. | McCaskill, Wichita North | 1933 |
| 880-yd. run | 1 min. 58.2 sec. | Blackmore, ElDorado | 1934 |
| 1-mile run | 4 min. 28.4 sec. | Cunningham, Elkhart | 1930 |
| 120-yd. high hurdles | 14.5 sec. | Lawrence, Wichita North | 1936 |
| 220-yd. low hurdles | 24.1 sec. | Gridley, Wichita | 1929 |
| Pole vault | 12 ft. 8 1/4 in. | Coffman, Ford | 1929 |
| Shot put | 58 ft. 3 1/8 in. | Dees, Lorraine | 1929 |
| High jump | 6 ft. 4 5/8 in. | { Buckman, Argentine | 1936 |
| Broad jump | 22 ft. 11 5/8 in. | { Baker, Wyandotte | 1933 |
| Discus throw | 134 ft. 9 7/8 in. | Papin, Iola | 1930 |
| Javelin throw | 184 ft. 1/2 in. | White, Pleasanton | 1928 |
| 1/2-mile relay—Class A | 1 min. 30.5 sec. | { Walton, Parsons | 1932 |
| Class B | | { Wichita North | 1932 |
| Mile relay—Class A | 1 min. 31.3 sec. | Wyandotte | 1932 |
| Class B | 3 min. 29.3 sec. | Kansas Vocational School, Topeka | 1931 |
| Medley relay—Class A | 3 min. 28.5 sec. | Wyandotte | 1932 |
| Class B | 3 min. 27.2 sec. | Kansas Vocational School, Topeka | 1932 |
| | 3 min. 31.5 sec. | Wichita East | 1932 |
| | | Kansas Vocational School, Topeka | 1933 |

WINNERS OF STATE TRACK MEETS

| Year | Meet Held at | Won by | Year | Meet Held at | Won by |
|------|--------------|-----------|------|--------------|-----------------|
| 1911 | Emporia | Norton | 1924 | Emporia | Winfield |
| 1912 | Topeka | Marion | 1925 | Emporia | Winfield |
| 1913 | Manhattan | Wichita | 1926 | Emporia | Wichita |
| 1914 | Manhattan | Wichita | 1927 | Emporia | Hutchinson |
| 1915 | Manhattan | Norton | 1928 | Emporia | Hutchinson |
| 1916 | Manhattan | Topeka | 1929 | Emporia | Wichita East |
| 1917 | Manhattan | Wichita | 1930 | Manhattan | Wichita East |
| 1918 | Manhattan | Abilene | 1931 | Emporia | Wyandotte |
| 1919 | Manhattan | Abilene | 1932 | Emporia | Arkansas City |
| 1920 | Manhattan | McPherson | 1933 | Emporia | Wichita North |
| 1921 | Manhattan | Winfield | 1934 | Emporia | Ks. Voc. School |
| 1922 | Emporia | Hawiland | 1935 | Wichita | Wichita North |
| 1923 | Emporia | Winfield | 1936 | Wichita | Independence |

RESULTS OF 1936 STATE TRACK MEET—WICHITA

| TRACK EVENTS | FIRST | SECOND | THIRD | FOURTH | TIME |
|----------------------|-----------------------|----------------------------|------------------------|----------------------|--------------------|
| 100-yd. dash | Kramer, Olathe | Smith, Independence | Wells, Hutchinson | Akers, Atchison | 10.5 |
| 220-yd. dash | Smith, Independence | Montgomery, Conway Spg. | Akers, Atchison | Lamkin, Kiowa | 23.5 |
| 440-yd. dash | Smith, Independence | Berger, Bucklin } Tie | | Lee, Wichita N. | 51.8 |
| | | Cross, Midian } | | | |
| 880-yd. dash | Nelson, Kackley | Schmolzle, St. Marys | Watson, Sumner | Faker, Wichita E. | 2:03.6 |
| 1-mile run | Cleland, Vinland | Clingman, Harlan | Skinner, Hutchinson | Goetz, Valley Center | 4:37.1 |
| 120-yd. high hurdles | Lawrence, Wichita N. | Herbic, Alma | Porter, Winfield | Thomas, Sumner | 15 sec. (new rec.) |
| 200-yd. low hurdles | Underwood, Wichita N. | Montgomery, Conway Spg. | Herbic, Alma | De Hart, Wichita N. | 23.2 |
| 1/2-mile relay | Wyandotte | Junction City | Wichita East | Winfield | 1:32.5 |
| Class A | Kiowa | Alma | Frontenac | Chase County | 1:34.1 |
| Class B | | | | | |
| 1-mile relay | EIDorado | Wichita East | Sumner | Junction City | 3:35.4 |
| Class A | Burns | Pretty Prairie | Ashland | Conway Springs | 3:38.5 |
| Class B | | | | | |
| Medley relay | Emporia | Lawrence | Goodland | Ottawa | 3:32.9 |
| Class A | Eskridge | Holyrood | Hamilton | Rexford | 3:33.5 |
| Class B | | | | | |
| FIELD EVENTS | | | | | |
| Pole vault | Carpenter, Hutchinson | Quinn, Arkansas City } Tie | | | 12 ft. |
| | | Ramsey, Wyandotte } | | | |
| | | Boren, Augusta } | | | |
| | | Breckenridge, Milton } | Burns, Independence | Vanderbilt, Eureka | 52 ft. 5/8 in. |
| | | | Kite, Eureka } Tie | | 6 ft. 4 7/8 in. |
| Shot put | Frank, Fowler | | Rogers, Independence } | | |
| High jump | Baker, Wyandotte | | Kline, Eskridge } | | |
| | Buckman, Argentine | | Burns, Independence } | | |
| | Roth, Milton | | Baker, Wyandotte } | | |
| | Kelly, Midian | Brown, Wichita E. | | Vanderbilt, Eureka | 124 ft. 5 in. |
| | Hayden, Hutchinson | Bachelor, Admire | | Knight, Independence | 174 ft. 7 in. |
| Discus throw | | Underwood, Wichita N. | | Kite, Eureka | 21 ft. 10 1/2 in. |
| Javelin throw | | | | | |
| Broad jump | | | | | |